



Powered S-Series



ENTASYS



VLF Subwoofers



New Product Guide

Fall 2008

The Next 40 Years of Innovative Loudspeakers Starts Here

INNOVATIVE DESIGN. LEGENDARY SOUND.



THE NEXT 40 YEARS OF
INNOVATIVE LOUDSPEAKERS
STARTS HERE.

Contents

ENTASYS Column Line-Array Systems



Pages 4-5

Powered S-Series



Pages 6-7

VLF Versatile Low Frequency Systems



Pages 8-9

Portable iBOX Systems



Pages 10-11

M12 - Install/Portable Options



Pages 12-13

R-Series R.25-94BZ Loudspeaker



Page 14

FORECASTER Ceiling System Software



Page 15

ENTASYS

High-Performance Indoor/Outdoor Column Line-Array System



The ENTASYS high-performance column line-array loudspeaker system is designed for permanent installation in applications such as auditoria, airports, train stations, conference centers, houses of worship, stadium concourses and museums. ENTASYS features a unique *three-way* full-range column and a low frequency extension column in the same size enclosure, offering superior performance, high output and high power handling capability in an architecturally appealing design that is weather-resistant for outdoor installations. ENTASYS systems may be constructed in multiple configurations to meet the acoustical design needs of the application.

ENTASYS outperforms other comparable systems, boasting multiple low frequency, midrange and high-frequency drivers for the most consistent vertical beamwidth available, free of unwanted lobes. A single full-range column exhibits a uniform, constant vertical beamwidth from 800 Hz to 16 kHz. ENTASYS also boasts an extremely wide, consistent horizontal beamwidth over the entire operating range. The six 3.5" low frequency drivers have better low frequency extension and higher power handling (600 watts total) than any other compact column line-array in its class. Each ENTASYS full-range column includes six neodymium low frequency drivers, eighteen 2.35" midrange drivers and six 7" long x 1" wide planar-coupled patent-pending Compact Ribbon Emulator (CRE) high frequency elements.

ENTASYS is designed to be modular, allowing the installer to place the center of the vertical system lobe symmetrically or asymmetrically about the vertical axis of the column array. This unique feature is only made possible by using Community's exclusive low frequency extension column. Each ENTASYS low frequency extension column contains six 3.5" LF drivers with optimized spacing, allowing extension of the narrow vertical beamwidth into the lower frequencies. The ENTASYS LF column contains a critically tuned



All ENTASYS systems are available in black or white finishes.

APPLICATIONS

- Houses of worship
- Auditoria, live theaters
- Gymnasiums, athletic facilities
- Convention centers, museums
- Meeting rooms and conference rooms
- Airports, train stations, stadium concourses
- Multipurpose outdoor and indoor venues

FEATURES

- 3-way column line-array with true line-array performance to 16 kHz
- Weather-resistant for outdoor installation
- Wide frequency range and high output level
- Highly intelligible voice reproduction and excellent musical sound quality
- Stylish, compact and unobtrusive appearance
- Available in black and white finishes
- Modular design for versatile coverage, free of unwanted lobes
- Simple installation using a wide variety of versatile mounting accessories
- Cost-effective, passive design with no internal electronics
- Five-year warranty

passive crossover network for seamless integration with the ENTASYS full-range column. Multiple ENTASYS full-range columns may be used to create extremely narrow focused vertical coverage. Or, by implementing tall arrays using both full-range and LF extension columns, separate nearfield and long throw vertical lobes covering the critical voice band can be created at independent vertical points on the column - something previously only possible using powered, steered arrays.

All ENTASYS systems are available from the factory in elegant black or white finishes, with each individual enclosure featuring a compact 5-1/2-inch wide by 7-3/8-inch deep "teardrop" shaped footprint and standing 44-1/2 inches tall. A wide range of mounting brackets and accessories are also available to fit nearly every installation design.

Model	Drivers	Frequency Response	Sensitivity	Power Handling (PGM)	Impedance	Dispersion (H x V)	Dimensions (H x W x D)
ENTASYS Full-Range	LF 6 x 3.5" MF 18 x 2.35" HF 6 x 7" CRE	200 Hz - 20 kHz	93 dB	1500W	12 ohms	120°H x 12°V (or 6°V) (800Hz- 16kHz)	44.5 x 5.5 x 7.36 in. (1129 x 140 x 187 mm)
ENTASYS LF	LF 6 x 3.5"	200 Hz - 1.6 kHz	90 dB	1500W	16 ohms	N/A	44.5 x 5.5 x 7.36 in. (1129 x 140 x 187 mm)

Preliminary Specifications. ENTASYS is available in the fourth quarter of 2008.

ENTASYS three-way full-range column shown with the grille removed.

Powered S-Series

High-Performance, Lightweight, Powered Loudspeakers



Community's S-Series family of portable linear-response loudspeakers for professional musicians is expanding with the introduction of powered versions of each model. The new Powered S-Series line eliminates the need for external system processing and amplification while addressing the demand for lightweight high performance portable sound systems. Powered S-Series systems add high-efficiency Class D amplifiers for better performance, less heat and maximum reliability. These new powered models also offer powerful DSP circuitry and feature-rich design.

The S-1296A and S-1596A are two-way models with 400 watts of low frequency power and 100-watt high frequency amplification. The S-3294A and S-3594A three-way models include additional 100-watt mid-range amps. Two powered subwoofers, the dual 15-inch S-2155A and dual 18-inch S-2188A, complete the new lineup, employing single 1000-watt amplifiers.

The new Powered S-Series includes powerful DSP features, such as four user-selectable preset voicings, a user-selectable Mic/Line sensitivity switch, and built-in high pass switch on every full-range loudspeaker for seamless integration with an S-Series subwoofer. The factory programmed settings feature steep crossover slopes, up to 10 equalization filters per driver, and multiple limiters. All Powered S-Series offer analog and AES3 digital inputs (S/PDIF compatible), and can convert an analog input signal into AES3 output for low loss digital signal distribution.

S-Series loudspeakers are precision engineered, both acoustically and structurally, to perform night after night under the demanding conditions encountered by travelling bands and DJs. Designed to meet the needs of working musicians, these loudspeakers feature exceptionally lightweight design and Community's legendary durability. These properties make S-Series a great choice for fixed installation in music venues as well, where abusive conditions are commonplace.



Nylon padded transport covers are available for each S-Series model.



Integrated casters on the passive S-2188 and powered S-2188A dual 18-inch subwoofers enable easy transport.

APPLICATIONS

- Bands and DJs
- Live sound, public address
- Club sound systems
- Mobile and installed DJ rigs
- Portable rental sound systems
- Corporate A/V

FEATURES

- Highly-efficient Class D amplifiers
- Four user-selectable presets enable various combinations of bass and treble adjustment
- Analog and AES3 digital inputs, converts analog input to AES3 output
- Universal power input (88-270 VAC)
- Power Factor Correction (PFC) included
- Multi-band limiting for driver protection (built into the DSP)
- Durable solid birch plywood enclosure and protective steel grilles
- Carbon Ring Cone LF drivers
- UC1 non-metallic, Ferrofluid-cooled compression driver
- Cool-Coil™ subwoofers
- Ergo-Grip handles
- Nylon padded transport covers available
- Five-year warranty

Model	Drivers	Total Power	Frequency Response	Max Output @ 1m (continuous)	Peak Output	Dispersion (H x V)	Dimensions (H x W x D)
S-1296A	LF 1 x 12" HF 1 x 1"	500W	80 Hz - 16 kHz	122 dB	125 dB	90° x 60°	23.9 x 14.9 x 13.4 in. (608 x 379 x 341 mm)
S-1596A	LF 1 x 15" HF 1 x 1"	500W	70 Hz - 16 kHz	124 dB	137 dB	90° x 60°	27.2 x 18.4 x 15.9 in. (690 x 467 x 404 mm)
S-3294A	LF 1 x 12" MF 1 x 6.5" HF 1 x 1"	600W	80 Hz - 16 kHz	123 dB	126 dB	90° x 40°	29.3 x 17.4 x 15.4 in. (744 x 441 x 390 mm)
S-3594A	LF 1 x 15" MF 1 x 6.5" HF 1 x 1"	600W	70 Hz - 16 kHz	123 dB	126 dB	90° x 40°	32.4 x 18.4 x 15.9 in. (823 x 467 x 404 mm)
S-2155A	LF 2 x 15"	1000W	40 Hz - 140 Hz	120 dB	125 dB	360° x 180°	18.4 x 37.4 x 20.4 in. (468 x 950 x 518 mm)
S-2188A	LF 2 x 18"	1000W	40 Hz - 140 Hz	125 dB	130 dB	360° x 180°	21.4 x 44.4 x 24 in. (544 x 1128 x 610 mm)

Preliminary Specifications. Powered S-Series is available in the first quarter of 2009.

VLF Series

Versatile Low Frequency Systems



The VLF208 and VLF212 are the first in a series of powerful and innovative new low frequency subwoofers from Community called the Versatile Low Frequency Series. The new VLF Series will include cardioid bass arrays, steered bass arrays and vertical bass columns. When arrayed, these systems are effective in reducing unwanted reflections in a variety of applications. All VLF subwoofers feature a compact, low-profile design that is ideal for theaters, restaurants, auditoria, houses of worship, schools and other venues, fitting into areas where larger subwoofers are impractical.

The VLF208 is a dual 8-inch, no-grille design that can be installed under stages, in walls or ceilings, or in other low profile locations in either the vertical or horizontal mounting position. Its extremely low profile enclosure is narrow enough to fit comfortably between wall studs, providing "hidden" LF extension. With a response down to 70 Hz in passive mode or 60 Hz using digital signal processing, the VLF208 can function in pairs as a steered bass array, and is equipped with fly points and four rubber feet with recessed foot mounting locations on two sides.

The VLF212 is a dual 12-inch, no-grille design with slot-loaded woofers for extended low frequency response down to 50 Hz in passive mode or 43 Hz using DSP. The portable version is equipped with two Ergo-Grip handles, a top-mounted pole socket and rubber feet. The enclosures incorporate eight fly points, dual NL4-compatible connectors and dual ¼" jacks with a high-pass output switch for running the subwoofer and a full-range cabinet from one single amp channel. The installed version removes the handles and pole socket and adds additional rigging points for creating steered subwoofer arrays.



VLF Subwoofers are available in black or white finishes.



APPLICATIONS

- Houses of worship, performing arts centers
- Theaters, restaurants
- Lecture halls, auditoria
- The "cafegymnasium"
- Portable bass reinforcement
- Under-stage, in-wall, under-seating and ceiling mount applications

FEATURES

- Low profile design, small footprint (VLF208 and VLF212 share a common width)
- Designed to work as traditional subs or in steered bass arrays
- DYNA-TECH™ protection circuitry
- Suitable for in-wall, under-seating, under-stage and other "hidden" LF applications
- Optional wall/ceiling mounting brackets and array brackets for multiple cluster configurations
- All VLF models available in black or white
- The VLF212 is available in portable and installation versions
- Five-year warranty

Steered array brackets (VLF-SAB) will be available to support arrays of each cabinet type or combinations of cabinets, including wall/ceiling mounts. The VLF208 can also be wall-mounted using its specially designed low-profile yoke bracket, the VLF-Y208. Both the VLF208 and VLF212 are available in elegant black or white finishes.



The portable version of the VLF212 includes two Ergo-Grip handles, a top-mounted pole socket and rubber feet.

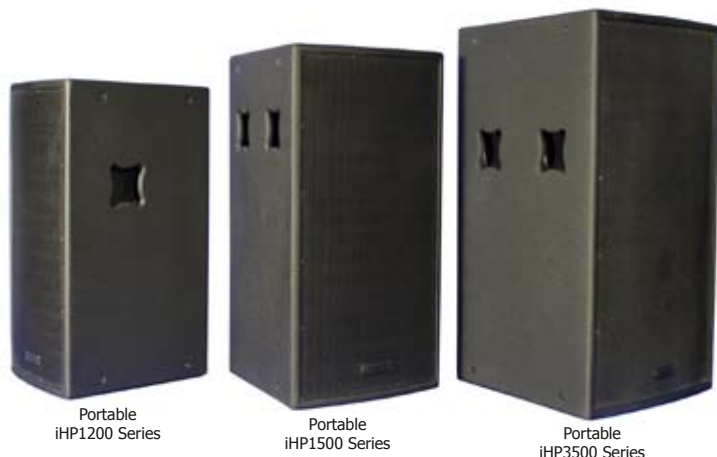


The VLF208 may be used vertically or horizontally.

Model	Drivers	Frequency Response (Processed)	Sensitivity	Power Handling (PGM)	Impedance	Dispersion (H x V)	Dimensions (H x W x D)
VLF208	LF 2 x 8"	60 to 160 Hz	96 dB	750W	4 ohms	360° x 180°	8.25 x 21.75 x 13 in. (210 x 552 x 330 mm)
VLF212	LF 2 x 12"	43 to 160 Hz	94 dB	750W	4 ohms	360° x 180°	20 x 21.75 in. x 20 in. (508 x 552 x 508 mm)

Portable iBOX

Premium High-Performance Loudspeaker Systems



Portable iBOX models include built-in Ergo-Grip handles, rubber feet and stacking cups on four recessed corner mounting points.

APPLICATIONS

- Houses of worship
- Auditoria, theaters, night clubs
- Corporate events, audio-visual
- Music and speech reinforcement
- Sports facilities & athletic venues
- Audio rentals

FEATURES

- Large format rotatable waveguides on full-range two-way models for excellent pattern control
- Full-range and subwoofer systems employ the same cabinet size
- Passive and bi-amp operating modes
- Load-rated M10 rigging points and OmniMount™ inserts
- Dual NL4-compatible locking connectors and barrier strip inputs
- Uniform voicing filters provide sonic consistency among varying models
- Five-year warranty

Community's iBOX series of installation loudspeakers has been expanded to offer portable versions of all full-range models, equipped with handles, rubber feet and stacking cups on four recessed corner mounting points. Designed for a wide range of installed sound applications, including theaters, auditoria, houses of worship and performance venues, the new iBOX is the only product in its class now available in a portable version. The iBOX family of high-performance loudspeakers covers a wide range of applications, with a selection of loudspeakers that require no DSP tuning or setup, an important asset to customers using multiple types of loudspeakers in their portable and installed applications. iBOX offers an easy-to-use solution that comes with an extensive range of installation accessories and mounting brackets, making it the most versatile system available.

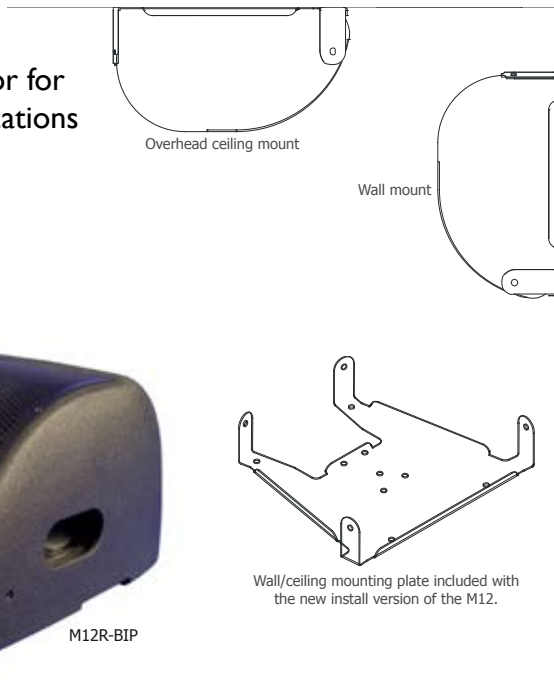
The iBOX line is available in three form factors: the iHP1 200 Series, the iHP1 500 Series and the iHP3500 Series. The two-way 1200-Series includes six full-range models combining a high-powered 12-inch mid/bass driver and a 1.4-inch exit (2.87-inch edge wound voice coil) compression driver on a fully rotatable, large-format horn. The 1500-Series also utilizes six rotatable HF horn options combined with a powerful 15-inch mid/bass driver. The 3500 Series is a large format, three-way full-range system utilizing the same powerful 15-inch high-power low frequency driver, and a 1.4-inch exit (2.87-inch edge wound voice coil) compression driver, adding an 8-inch mid-range driver.

For systems requiring greater LF coverage, the iBOX line also includes the i112S and i212S subwoofers, designed in the same form factor as the 1200-Series, the i115S and i215S subs, utilizing the 1500-Series cabinetry, and the i118S and i215LVS with identical enclosure dimensions as the 3500-Series for uniform, streamlined arrays, clusters and distributed systems.

Model	Drivers	Frequency Response	Sensitivity	Power Handling (PGM)	Impedance	Dispersion (H x V)	Dimensions (H x W x D)
iHP1244P	LF 1 x 12" HF 1 x 1.4"	80 Hz - 18 kHz	100 dB	1500W	8 ohms	40° x 40°	30.4 x 16 x 18.3 in. (773 x 407 x 464 mm)
iHP1264P	LF 1 x 12" HF 1 x 1.4"	80 Hz - 18 kHz	99 dB	1500W	8 ohms	60° x 40°	30.4 x 16 x 18.3 in. (773 x 407 x 464 mm)
iHP1266P	LF 1 x 12" HF 1 x 1.4"	80 Hz - 18 kHz	99 dB	1500W	8 ohms	60° x 60°	30.4 x 16 x 18.3 in. (773 x 407 x 464 mm)
iHP1294P	LF 1 x 12" HF 1 x 1.4"	80 Hz - 18 kHz	99 dB	1500W	8 ohms	90° x 40°	30.4 x 16 x 18.3 in. (773 x 407 x 464 mm)
iHP1296P	LF 1 x 12" HF 1 x 1.4"	80 Hz - 18 kHz	98 dB	1500W	8 ohms	90° x 60°	30.4 x 16 x 18.3 in. (773 x 407 x 464 mm)
iHP1299P	LF 1 x 12" HF 1 x 1.4"	80 Hz - 18 kHz	98 dB	1500W	8 ohms	90° x 90°	30.4 x 16 x 18.3 in. (773 x 407 x 464 mm)
iHP1544P	LF 1 x 15" HF 1 x 1.4"	60 Hz - 18 kHz	101 dB	1500W	8 ohms	40° x 40°	33.8 x 18.3 x 19.9 in. (858 x 464 x 505 mm)
iHP1564P	LF 1 x 15" HF 1 x 1.4"	60 Hz - 18 kHz	100 dB	1500W	8 ohms	60° x 40°	33.8 x 18.3 x 19.9 in. (858 x 464 x 505 mm)
iHP1566P	LF 1 x 15" HF 1 x 1.4"	60 Hz - 18 kHz	100 dB	1500W	8 ohms	60° x 60°	33.8 x 18.3 x 19.9 in. (858 x 464 x 505 mm)
iHP1594P	LF 1 x 15" HF 1 x 1.4"	60 Hz - 18 kHz	99 dB	1500W	8 ohms	90° x 40°	33.8 x 18.3 x 19.9 in. (858 x 464 x 505 mm)
iHP1596P	LF 1 x 15" HF 1 x 1.4"	60 Hz - 18 kHz	100 dB	1500W	8 ohms	90° x 60°	33.8 x 18.3 x 19.9 in. (858 x 464 x 505 mm)
iHP1599P	LF 1 x 15" HF 1 x 1.4"	60 Hz - 18 kHz	101 dB	1500W	8 ohms	90° x 90°	33.8 x 18.3 x 19.9 in. (858 x 464 x 505 mm)
iHP3564P	LF 1 x 15" MF 1 x 8" HF 1 x 1.4"	80 Hz - 16 kHz	98 dB	1500W	8 ohms	60° x 40°	36.4 x 21 x 22 in. (925 x 533 x 559 mm)
iHP3594P	LF 1 x 15" MF 1 x 8" HF 1 x 1.4"	80 Hz - 16 kHz	99 dB	1500W	8 ohms	90° x 40°	36.4 x 21 x 22 in. (925 x 533 x 559 mm)

M12

High-Performance Monitor for Install and Portable Applications



Community now offers the M12 monitor with rubber pocket grip handles for effortless portability, and a larger, easier-to-access connector base. The M12's new recessed handles are innovatively designed for lifting by both handles or just one, making it one of the most ergonomically designed stage monitors available. The base of the M12 has also been redesigned to provide easier access to the input connectors, streamlining setup and teardown times for live events and portable applications. The M12 is ideal for any application where low visibility is a key requirement, including televised and corporate events, houses of worship, as well as theater and stage performances.

The M12's high frequency driver is mounted to a molded one-piece asymmetrical horn with a 90-degree pattern at the top and 40 degree at the bottom, allowing full-range monitor output close up or at a distance. This unique pattern delivers even coverage while keeping energy away from stage walls. For installers seeking to mount the M12 to walls or ceilings, an optional built-to-order install version will also be available with four M10 hang points and a mounting bracket plate for permanent installation. The install version of the M12 can be used anywhere a conventional 12-inch two-way speaker cabinet would be used, as well as in many applications where a conventional speaker cabinet would not, such as overhead or under-balcony use, conference rooms and distributed systems.

The M12 is available in low-luster black or white finishes, with the HF horn molded into the faceplate to either the right or left of the LF driver for "mirror-image" pairs. With Community's latest improvements, it is also now available with or without handles or mounting points, giving the user more choices than ever.



Available in black or white, with or without handles



Rear view of molded enclosure



Bottom view of molded enclosure



Discreet on-stage monitoring



Elegant aesthetic design

APPLICATIONS

- Televised live events
- Corporate events, conference rooms
- Live stage and small theater events
- Houses of worship
- Overhead fill speakers
- Auditoria, lecture halls, underbalcony
- Wall and ceiling mount applications in any room with a relatively low ceiling

FEATURES

- Low profile, high style exterior with small footprint
- Unique asymmetrical 40°-90° x 70° coverage pattern
- Multilayer glass composite construction
- Ergonomic rubber pocket grip handle
- Non-reflective exterior with matching heavy-duty non-reflective grille
- High powered, 12-inch woofer
- 2-inch exit wide-band compression driver on an asymmetrical horn
- Switchable bi-amp/passive configuration with well protected dual NL4 connectors
- Available in black or white finishes, with mirror right or left horn configurations
- Optional installation models available with M10 hang points and wall/ceiling mounting plate included
- Five-year warranty

Model	Drivers	Frequency Response	Sensitivity	Power Handling (PGM)	Impedance	Dispersion (H x V)	Dimensions (H x W x D)
M12R	LF 1 x 12" HF 1 x 2"	80 Hz-16 kHz	LF: 99 dB HF: 106 dB	750W passive Bi-amp LF: 750W Bi-amp HF: 160W	8 ohms	40°-90° x 70°	10.5 x 21.5 x 20.75 in. (267 x 546 x 527 mm)
M12L	LF 1 x 12" HF 1 x 2"	80 Hz-16 kHz	LF: 99 dB HF: 106 dB	750W passive Bi-amp LF: 750W Bi-amp HF: 160W	8 ohms	40°-90° x 70°	10.5 x 21.5 x 20.75 in. (267 x 546 x 527 mm)

R.25-94BZ

Multipurpose Compact 8-Inch Full-Range



R.25's are available in black or light grey.

APPLICATIONS

- Convention centers
- Fill speakers for stadia, athletic fields, arenas and race tracks
- Outdoor background music/paging
- Theme and amusement parks
- Fairgrounds and rodeos
- Malls, cruise ships, skating rinks
- Swimming pools

FEATURES

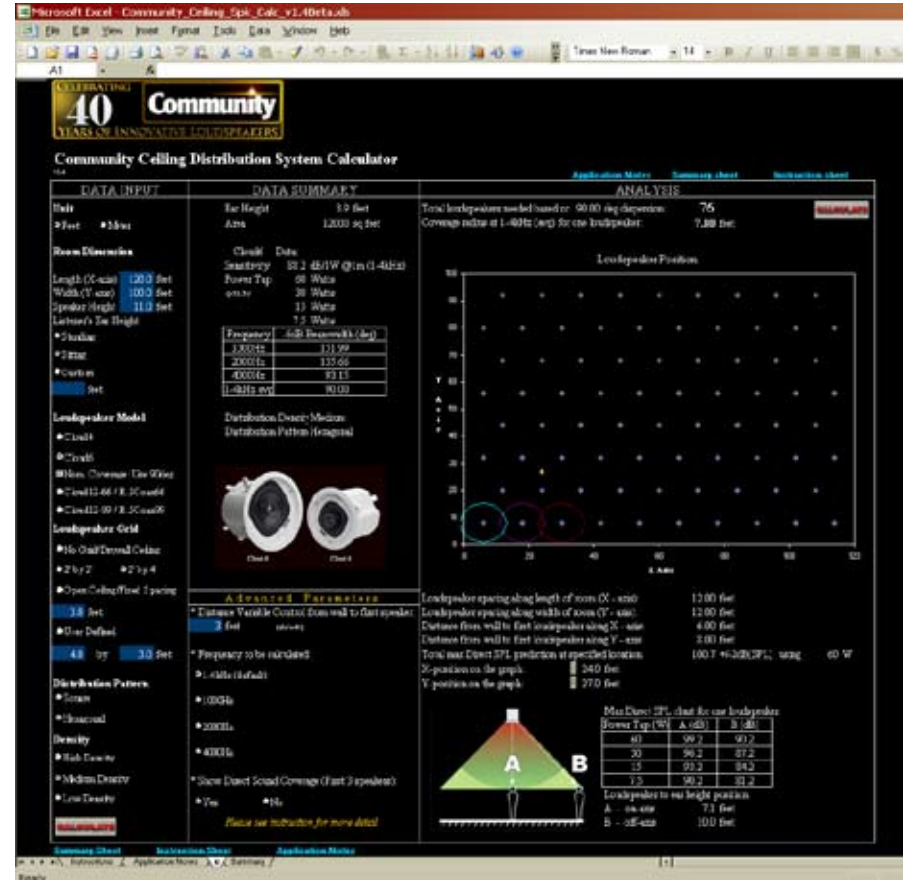
- High fidelity, all horn loaded
- High power 8" cone LF driver with Carbon Ring Cone Technology
- Rotomolded, UV-resistant enclosure
- Integral mounting points
- High power passive crossover
- Black powder-coated yoke included for easy installation
- 1-3/8" pole mount socket for portable indoor/outdoor applications
- 200W, 70V/100V autoformer version available
- Available in black or light grey

Community's popular R.25 model is now available in an "all-black" version with a black enclosure, black grille and black yoke. As the most compact model in the acclaimed R-Series, the R.25 was built to provide high quality voice and music performance in both indoor and outdoor venues, as well as portable applications. Featuring a horn-loaded, high power 8" cone LF driver and coaxial HF compression driver with a weather-resistant diaphragm, the R.25 combines wide frequency response with excellent efficiency and projection ability. Ferrofluid is used in the voice coil gaps to prevent corrosion and improve thermal conductivity for increased power handling and reduced power compression. The HF driver is coupled to a nominal 90° x 40° horn, and the HF horn assembly is coaxially mounted with the LF driver to minimize interference at crossover. The combination of high quality voice reproduction and music performance in a compact, weather-resistant system makes the R.25 ideally suited for use in waterparks, cruise ships, queue lines, sports venues, kiosks, concession stands, ticket counters, train platforms, and many other applications.

Model	Drivers	Frequency Response	Sensitivity	Power Handling (PGM)	Impedance	Dispersion (H x V)	Dimensions (H x W x D)
R.25-94BZ	LF 1 x 8" HF 1 x 3/4"	160Hz - 12.5kHz	97 dB	500W	8 ohms	90° x 40°	11.3 x 11.3 x 13.3 in. (287 x 287 x 338mm)
R.25-94BTZ	LF 1 x 8" HF 1 x 3/4"	160Hz - 13kHz	96 dB	200W (70/100V)	200W: 25 ohms 100W: 50 ohms 50W: 100 ohms 25W: 200 ohms	90° x 40°	11.3 x 11.3 x 13.3 in. (287 x 287 x 338 mm)

FORECASTER Ceiling System Software

Easy-to-Use Ceiling Distributed System Calculator



Community's new FORECASTER Ceiling System Software is an easy-to-use engineering tool which provides general design suggestions for ceiling systems. This free utility program helps select the proper Community ceiling speaker to use for various applications, based on desired music level or background noise level and on the loudspeaker's dispersion. The user inputs basic information on the dimensions and details of the room to compute the most effective loudspeaker models for that project and the quantity of loudspeakers. This calculator includes advanced tools to provide a high degree of engineering precision. FORECASTER Ceiling System Software has a complete package of features that are needed in the design phase, plus a unique feature that allows the user to virtually "walk" around a room using a keyboard or mouse and automatically calculate the total direct sound pressure level. By "walking" in the room, average SPL can be judged and total SPL in a certain location can be predicted. The FORECASTER program can be obtained by downloading from www.communitypro.com or by contacting Community for a free CD-ROM. For additional technical assistance and more sophisticated sound system predictions, contact Community's Technical Applications Group (TAG) at (610) 876-3400 or tagteam@communitypro.com.



R.25-94BZ



Portable iBOX



Multi-use M12

Community

INNOVATIVE DESIGN. LEGENDARY SOUND.

Community Professional Loudspeakers

333 East Fifth Street, Chester, PA 19013-4511 USA

Phone 610 876 3400 | Fax 610 874 0190

www.communitypro.com

NPG20080904JL